



**WASHINGTON**  
ONE THOUSAND

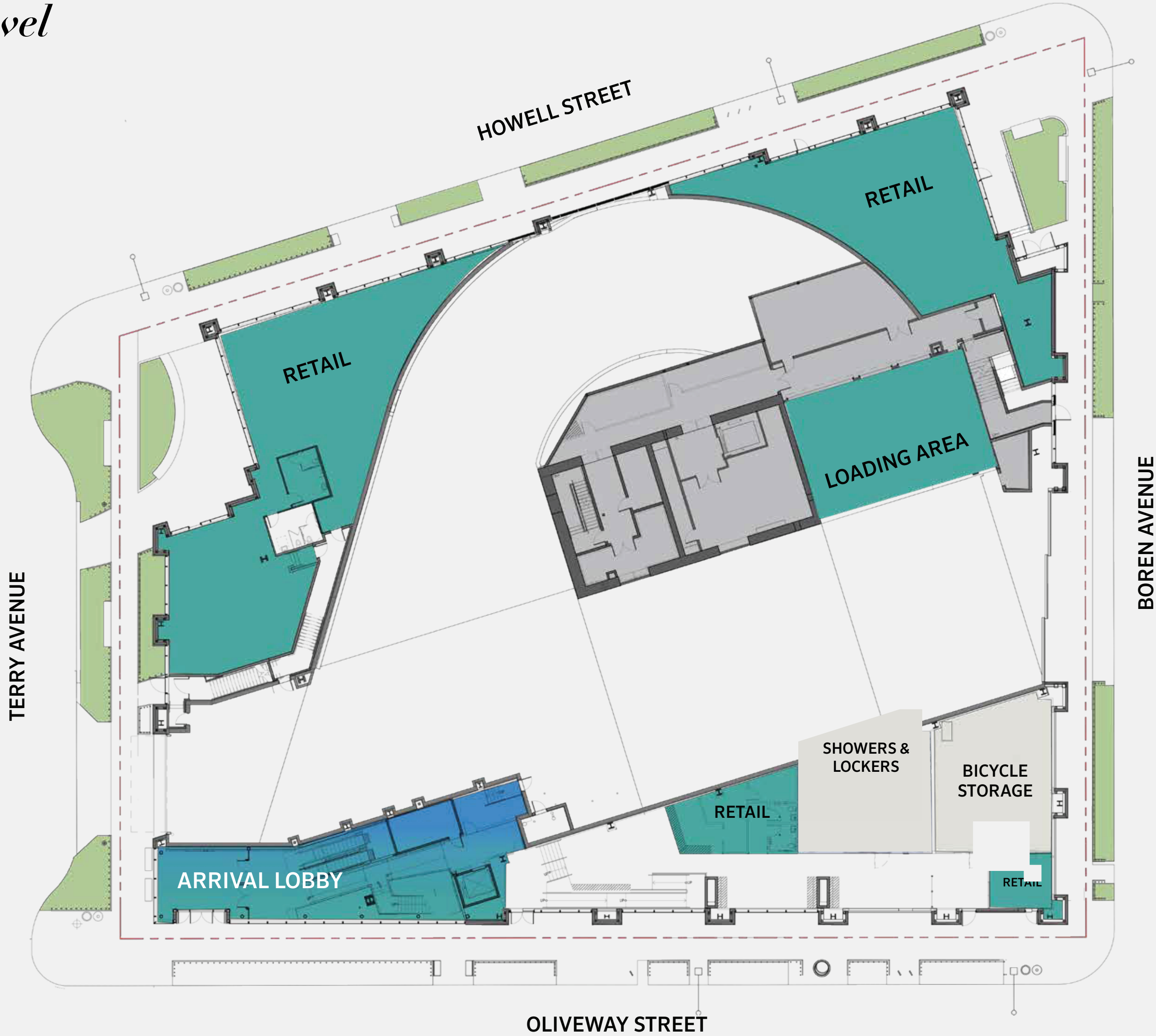
*Floorplans*

Site Plan





*Floorplan Ground Level*



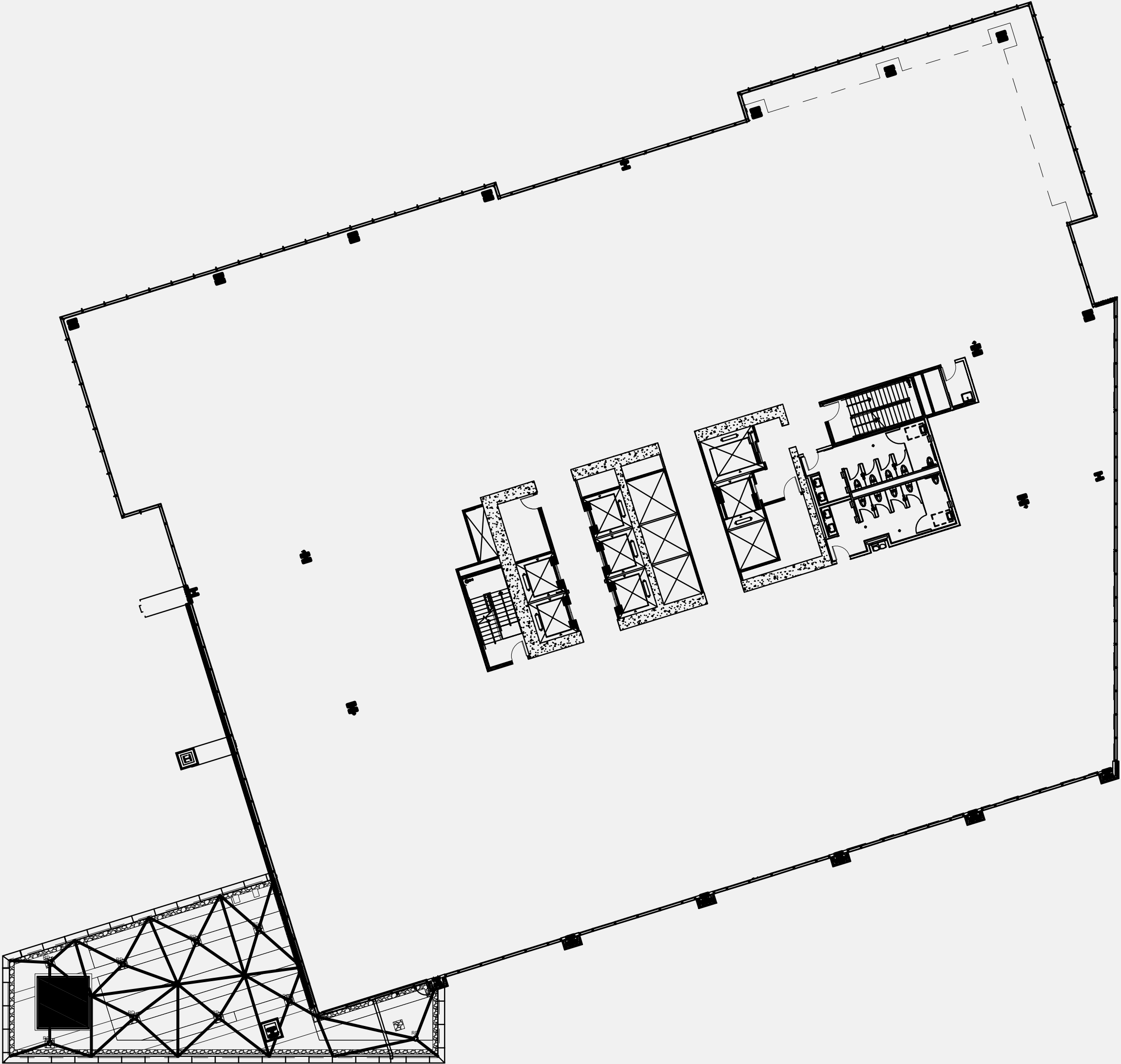


*Floorplan Level II*

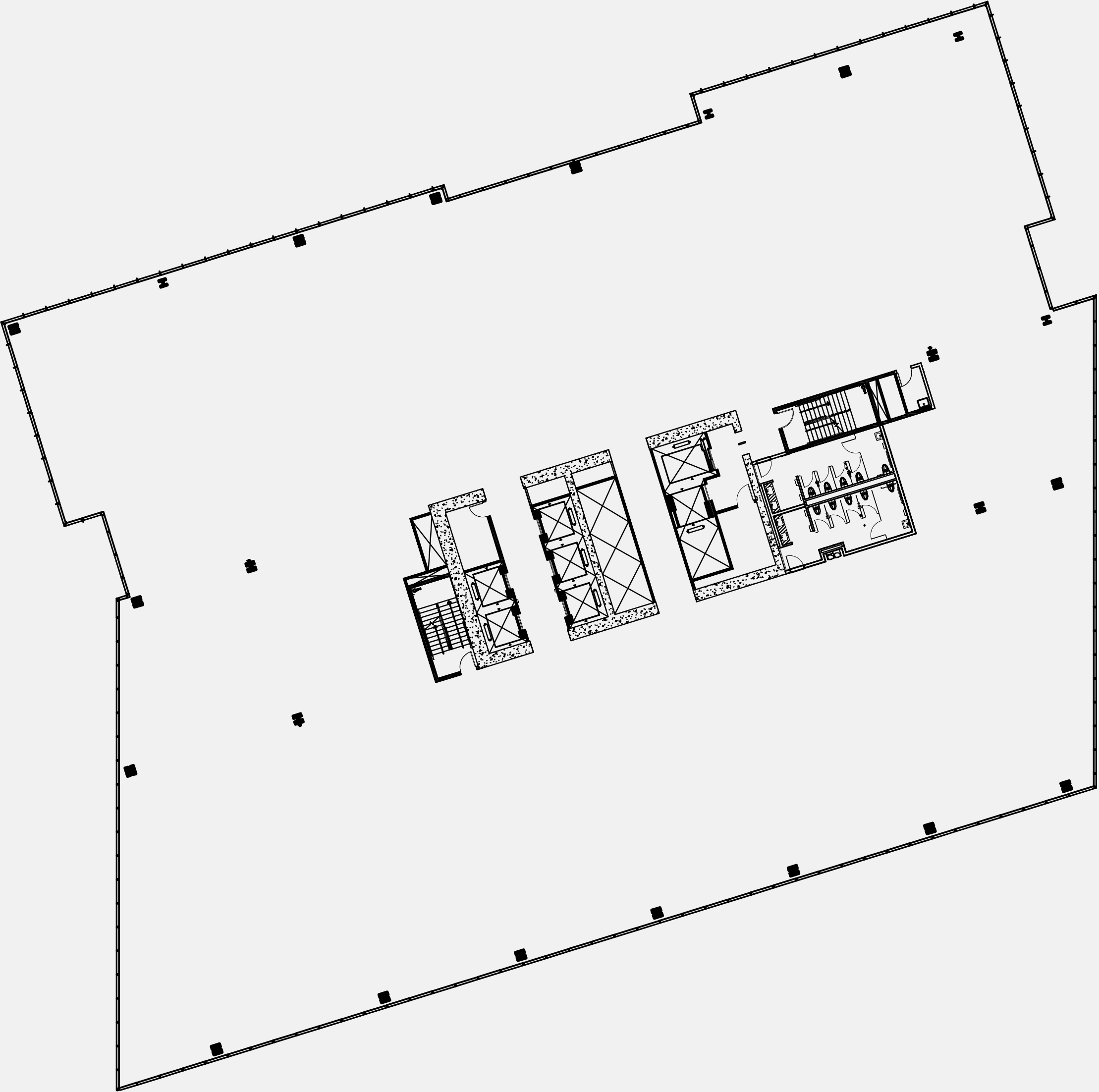




*Floor 3*  
**± 33,904 SF**

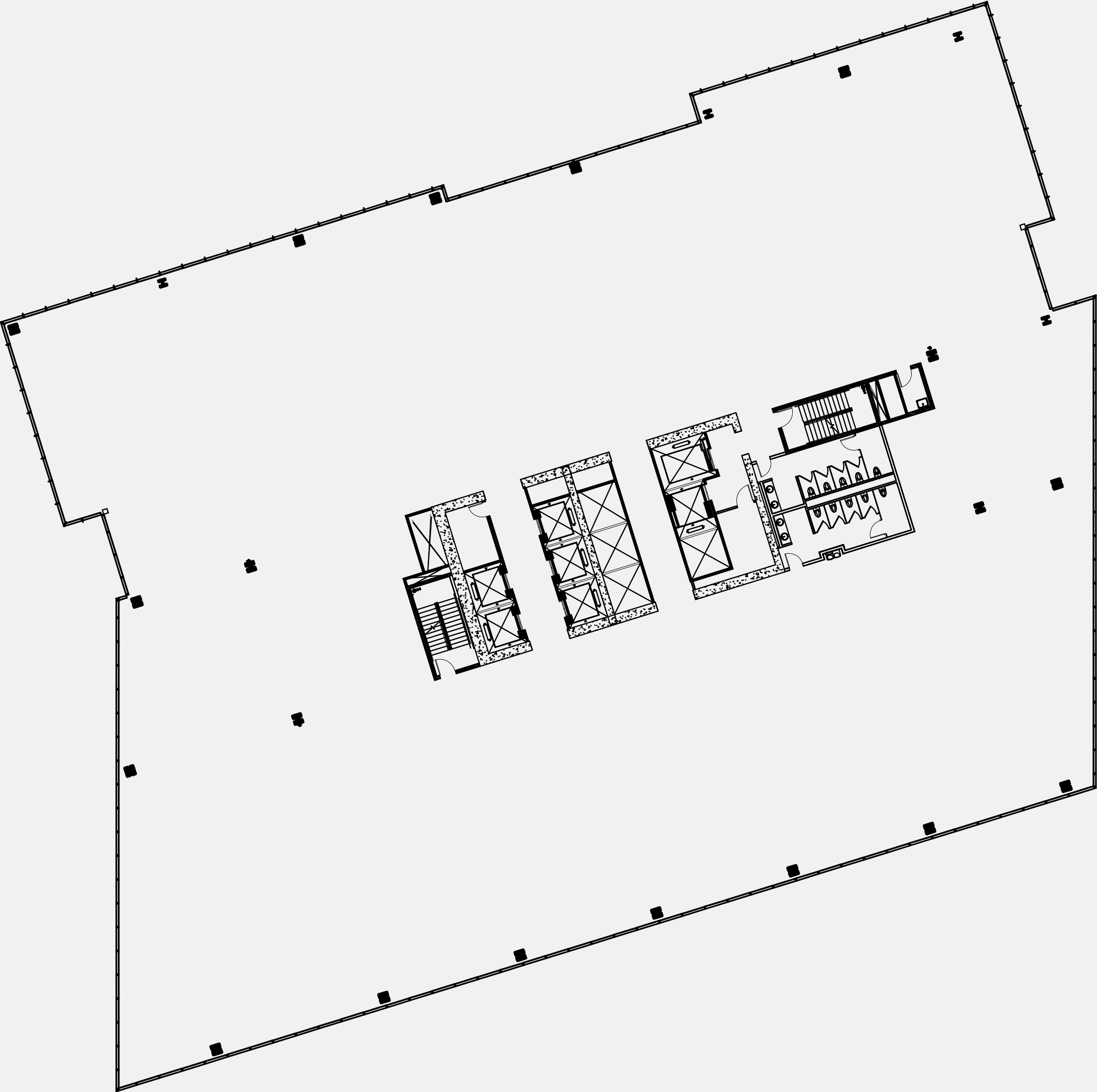


*Floor 4*  
**± 36,873 SF**

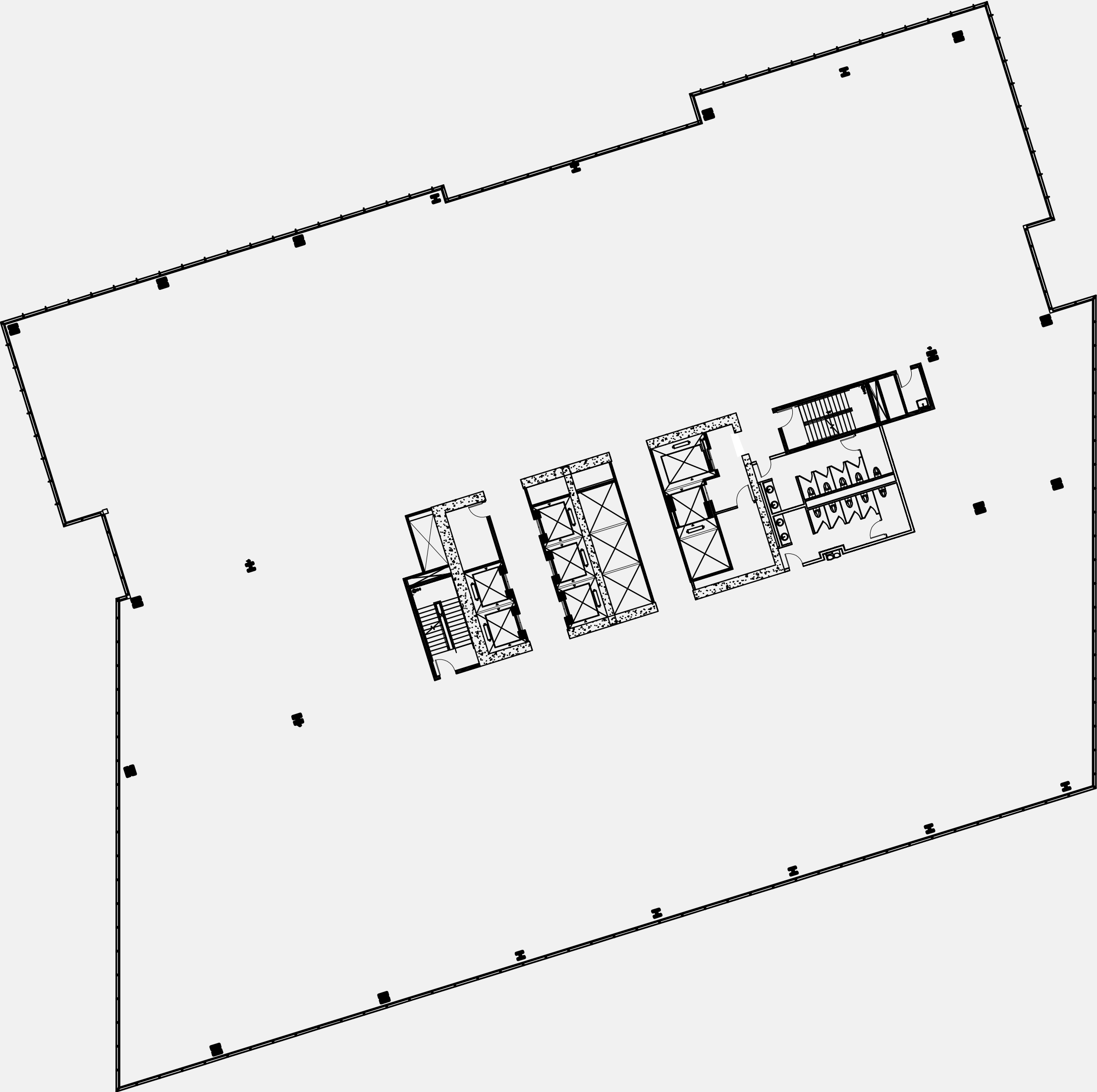




*Floor 5*  
**± 36,912 SF**

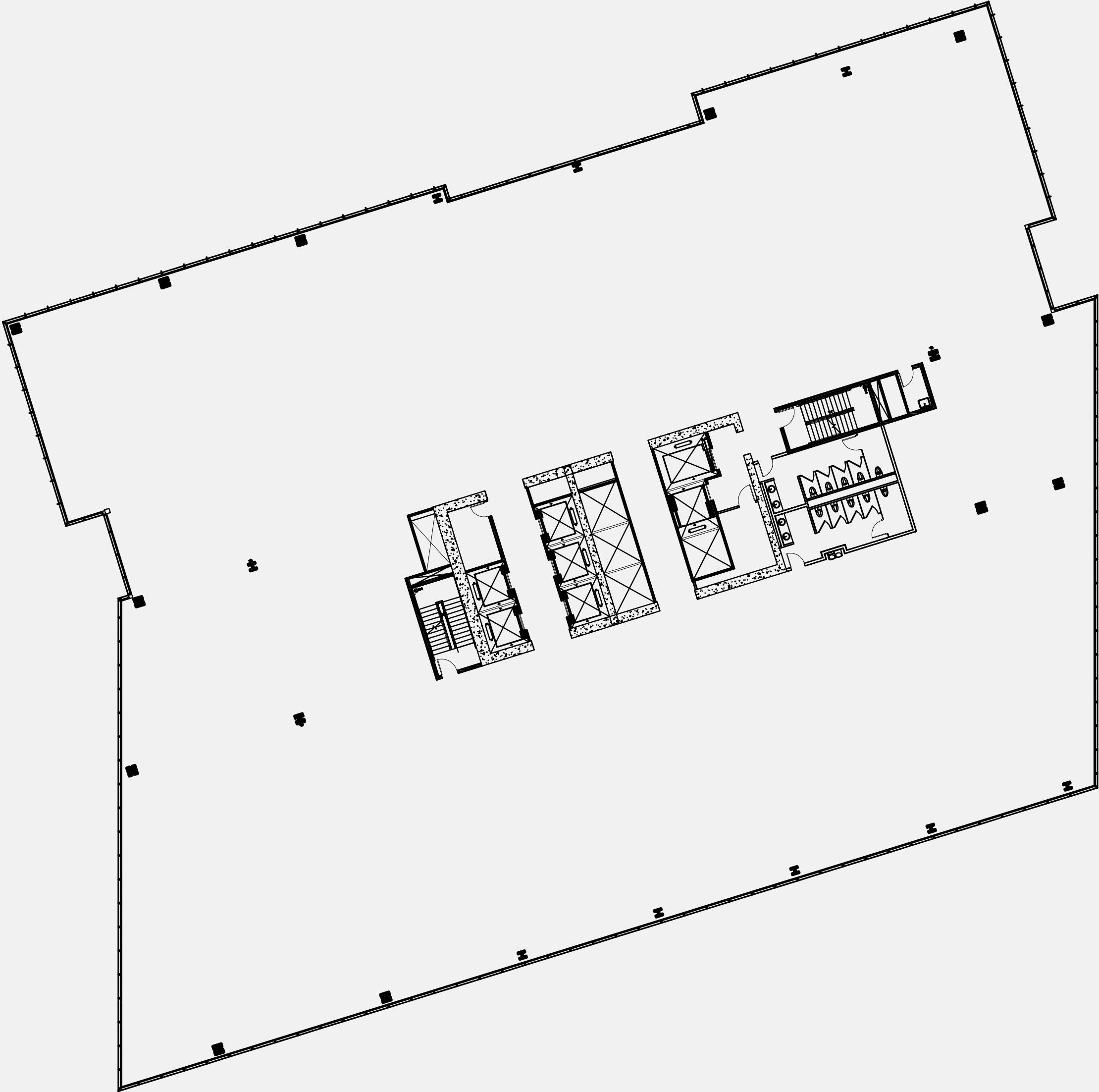


*Floor 6*  
**± 36,912 SF**

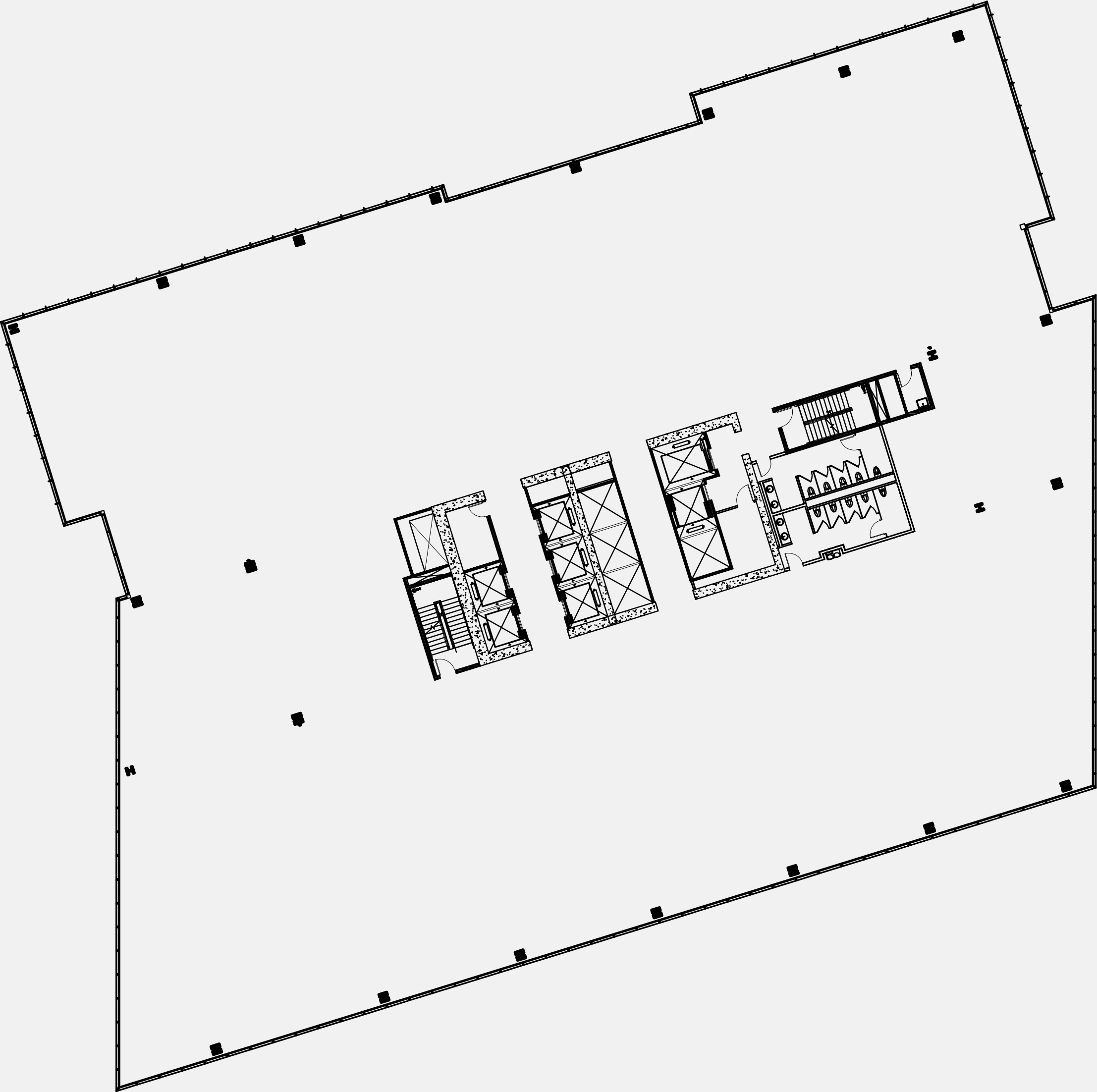




*Floor 7*  
**± 36,912 SF**

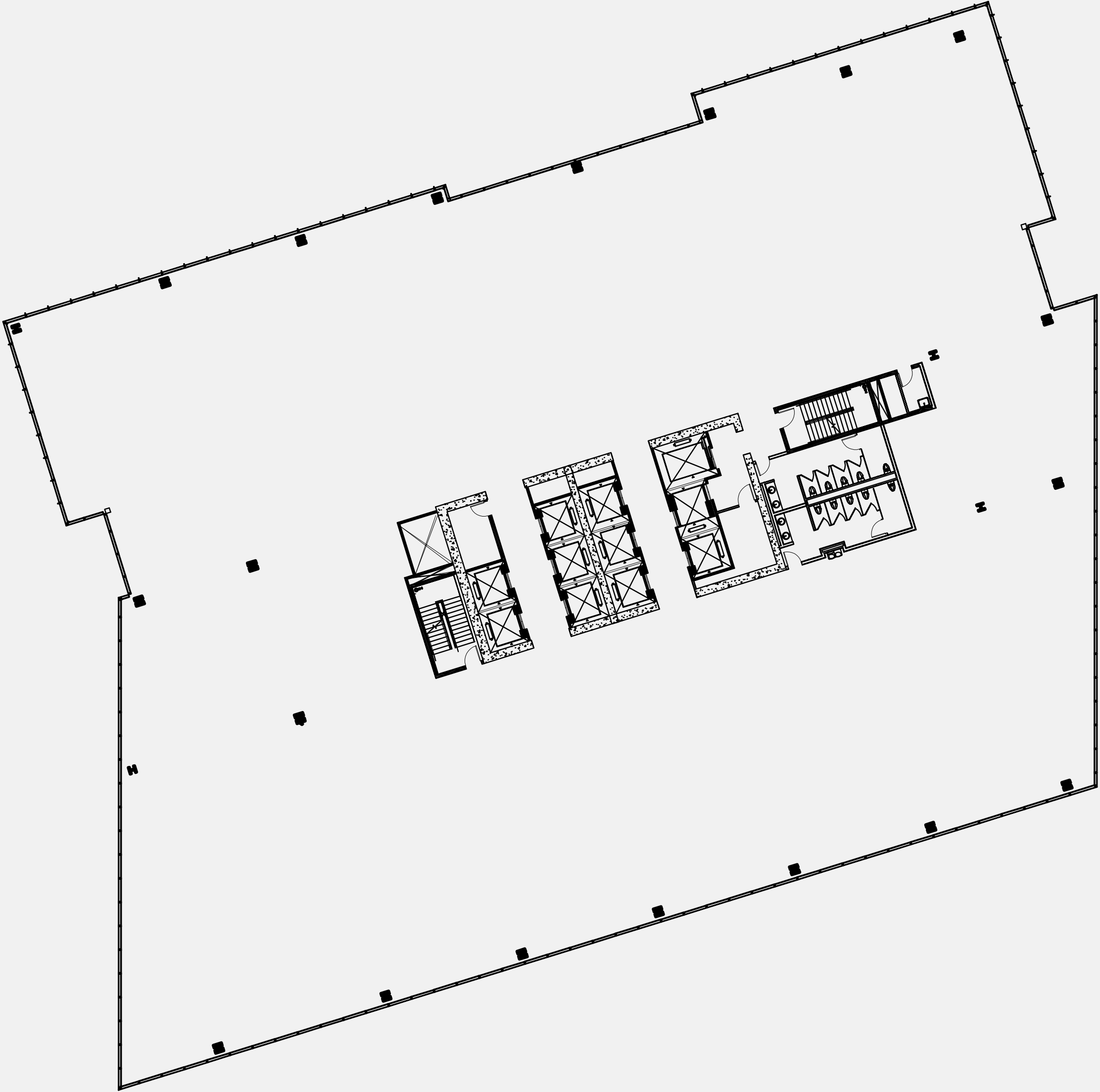


*Floor 8*  
**± 36,880 SF**

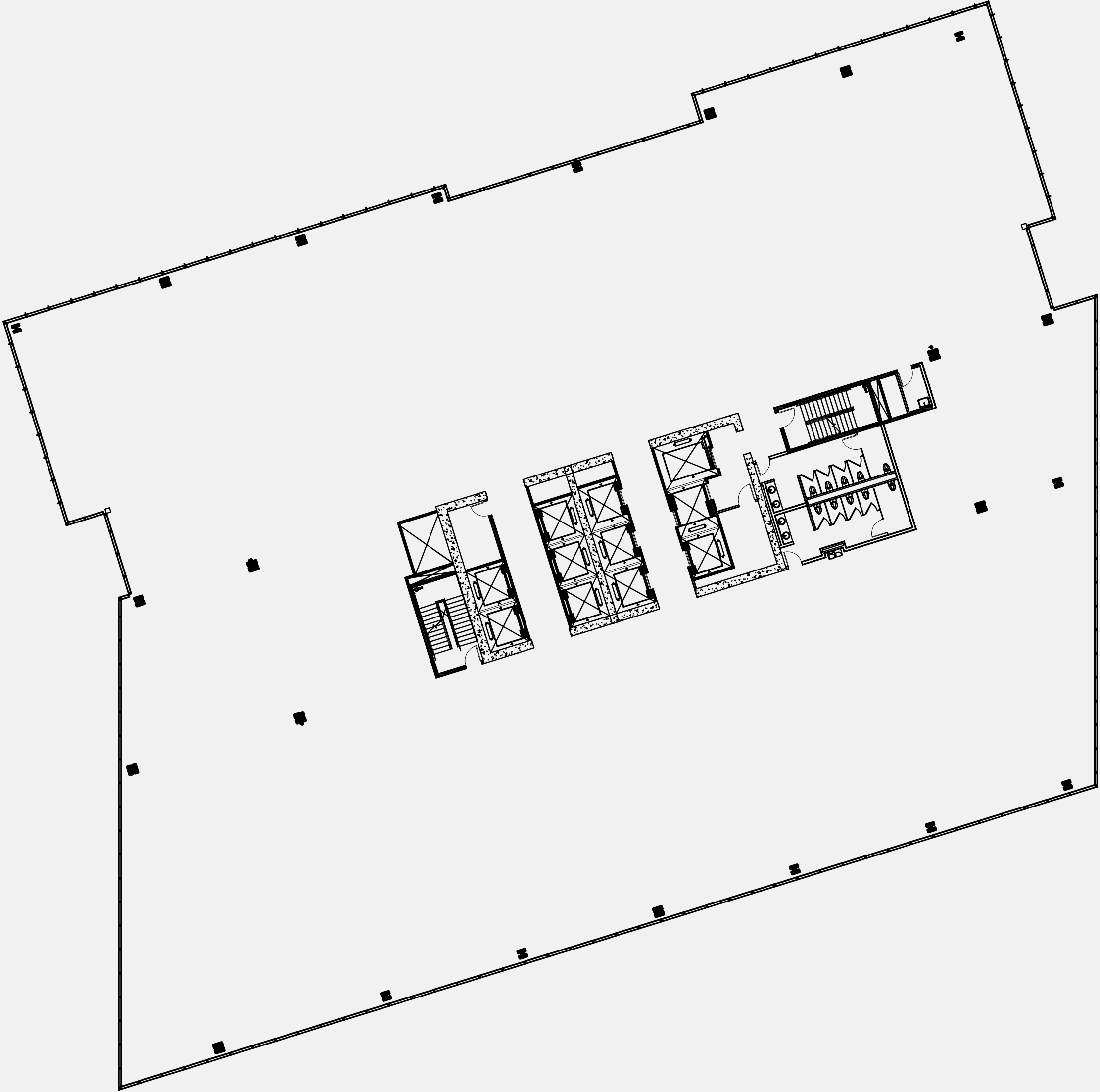




*Floor 9*  
**± 37,893 SF**

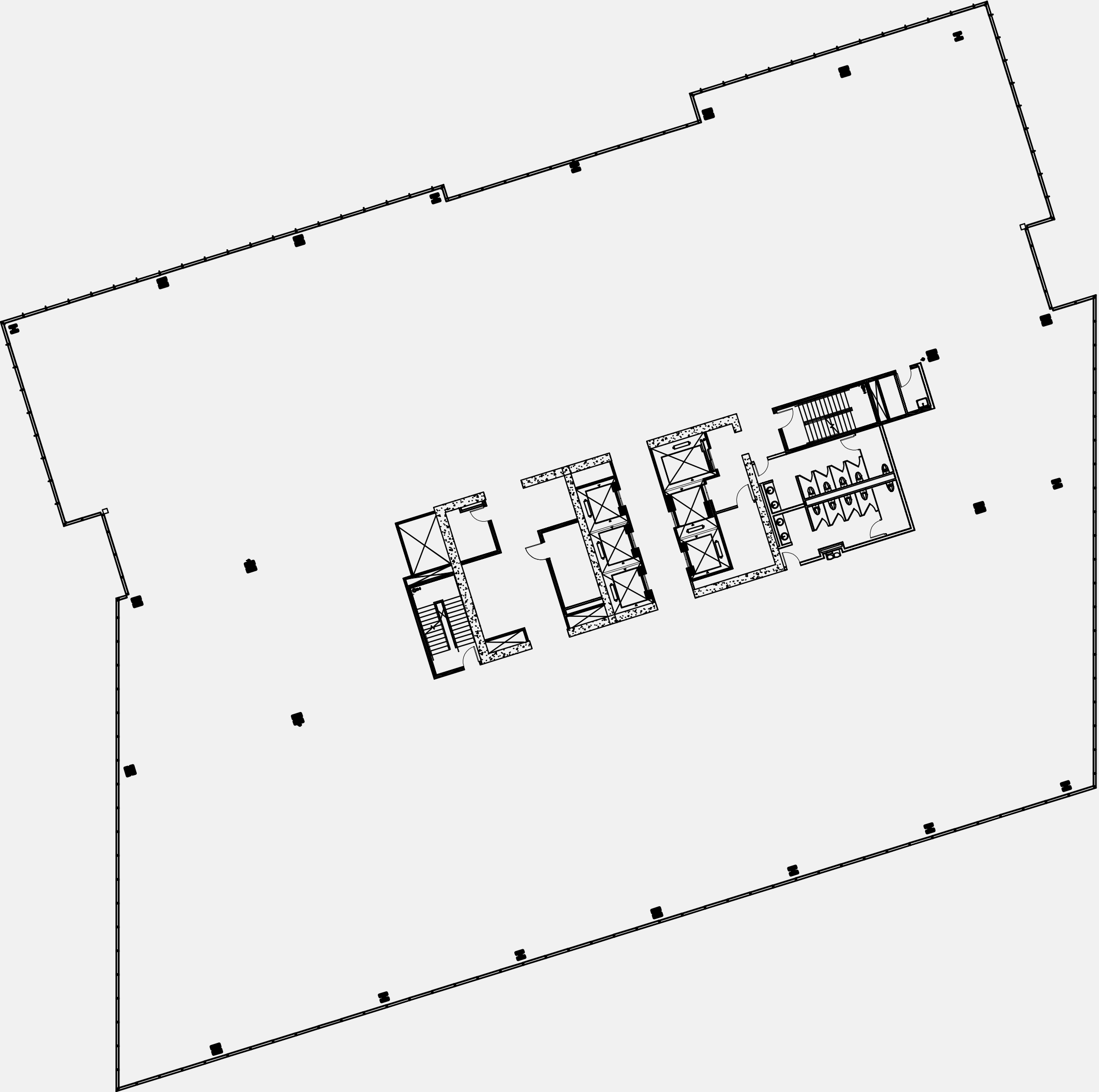


*Floor 10*  
**± 37,893 SF**

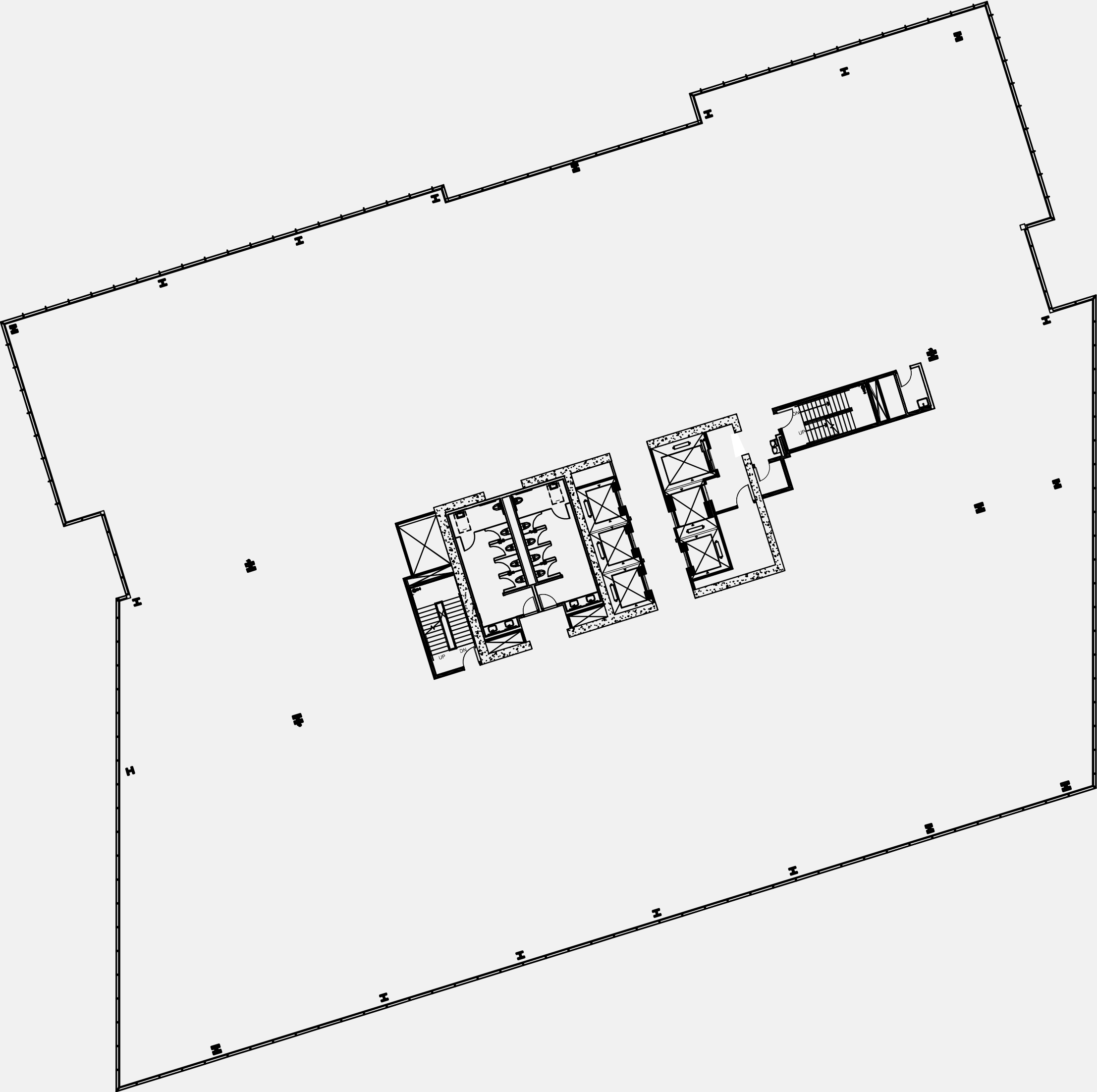




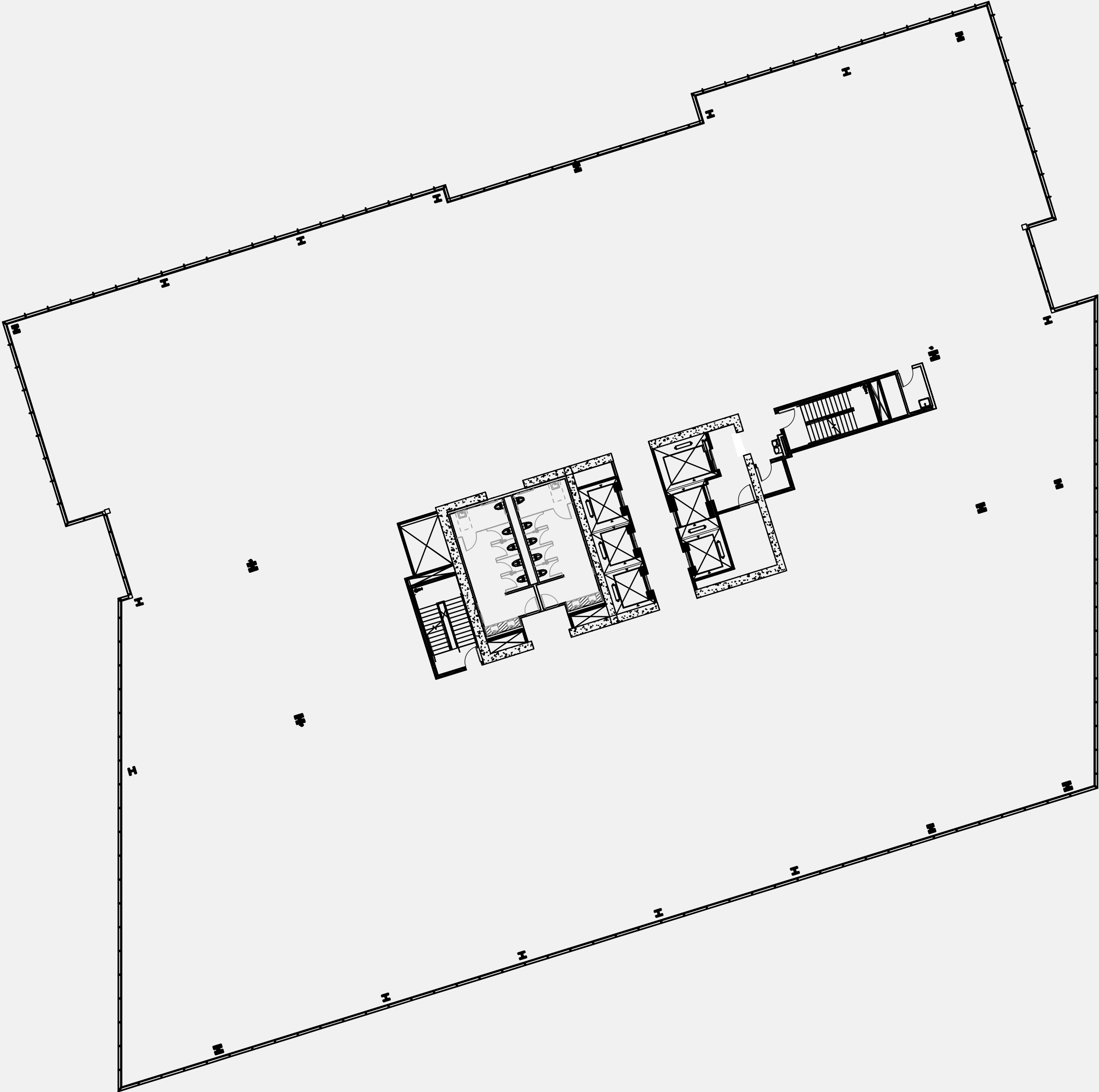
*Floor 11*  
**± 37,153 SF**



*Floor 12*  
**± 37,342 SF**

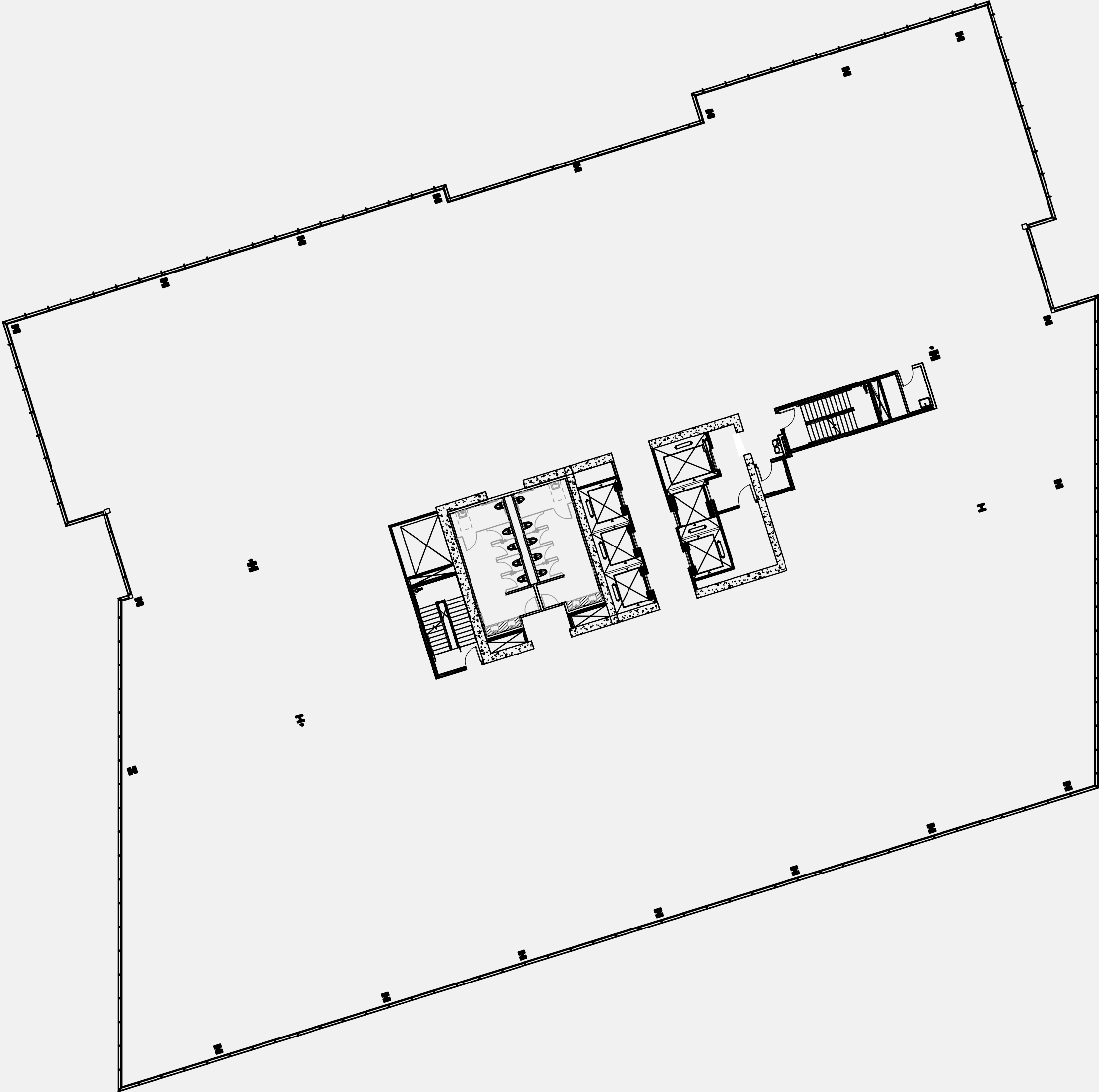


*Floor 13*  
**± 37,342 SF**

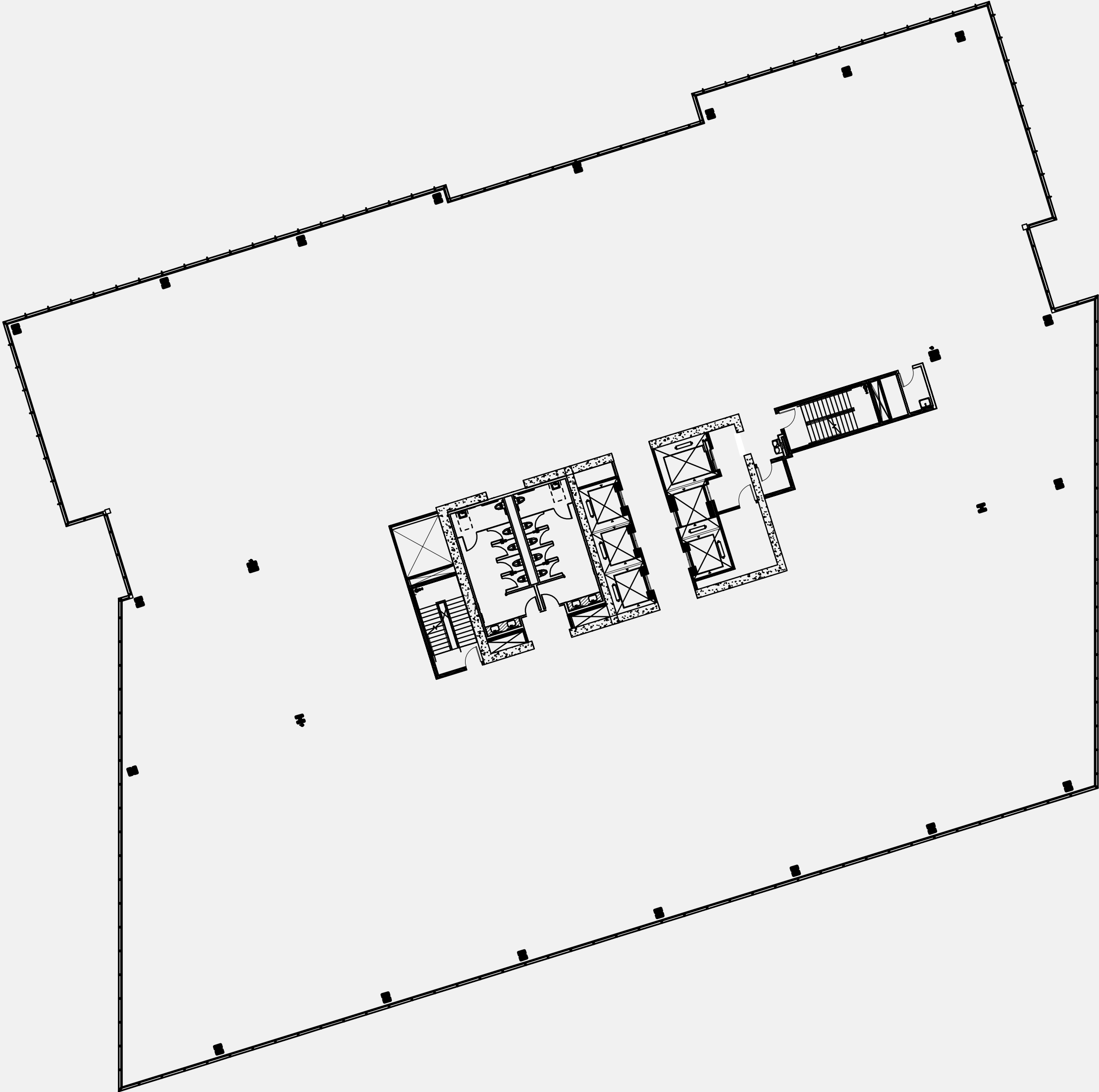




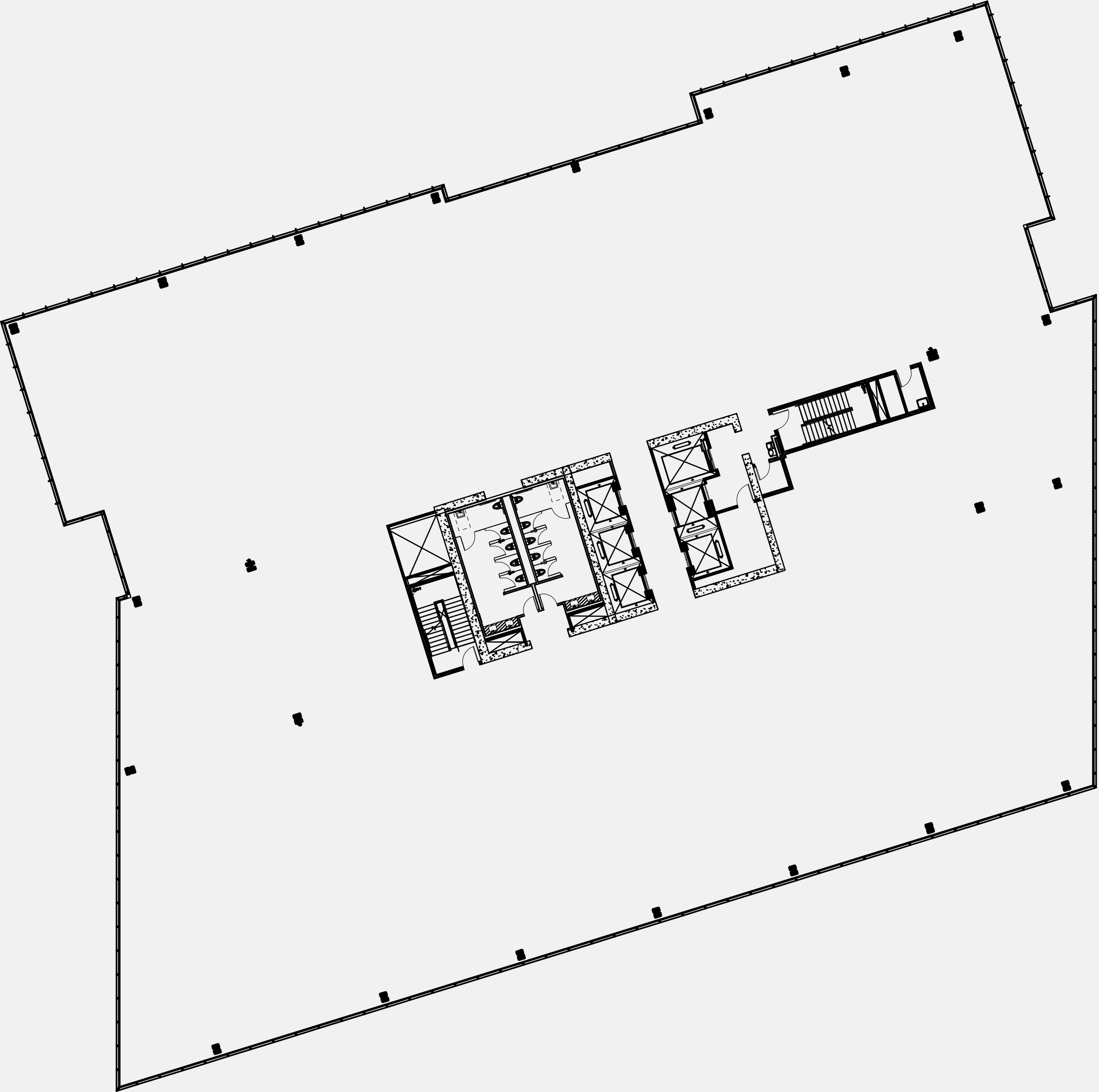
*Floor 14*  
**± 37,317 SF**



*Floor 15*  
**± 37,319 SF**

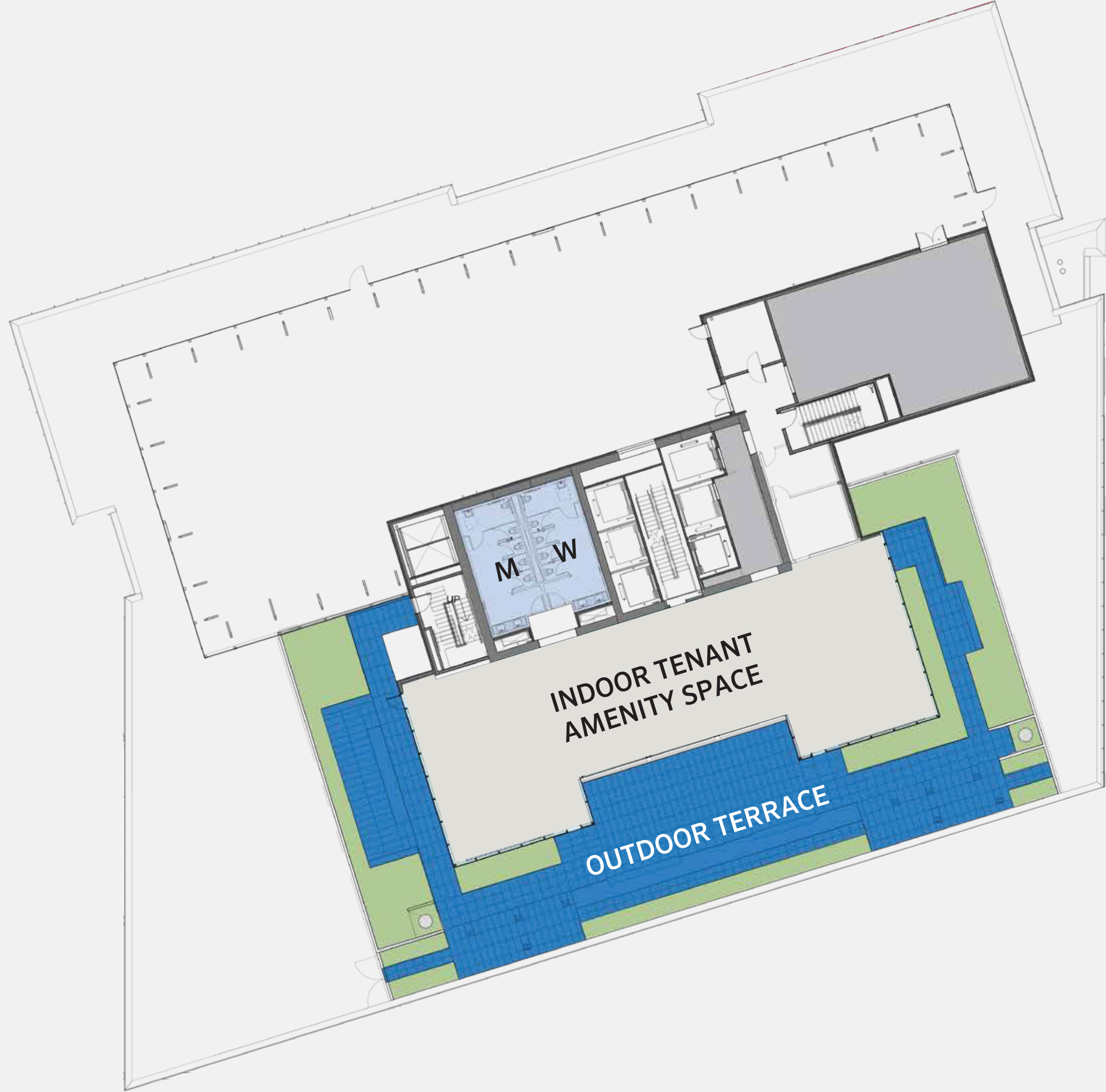


*Floor 16*  
**± 37,317 SF**

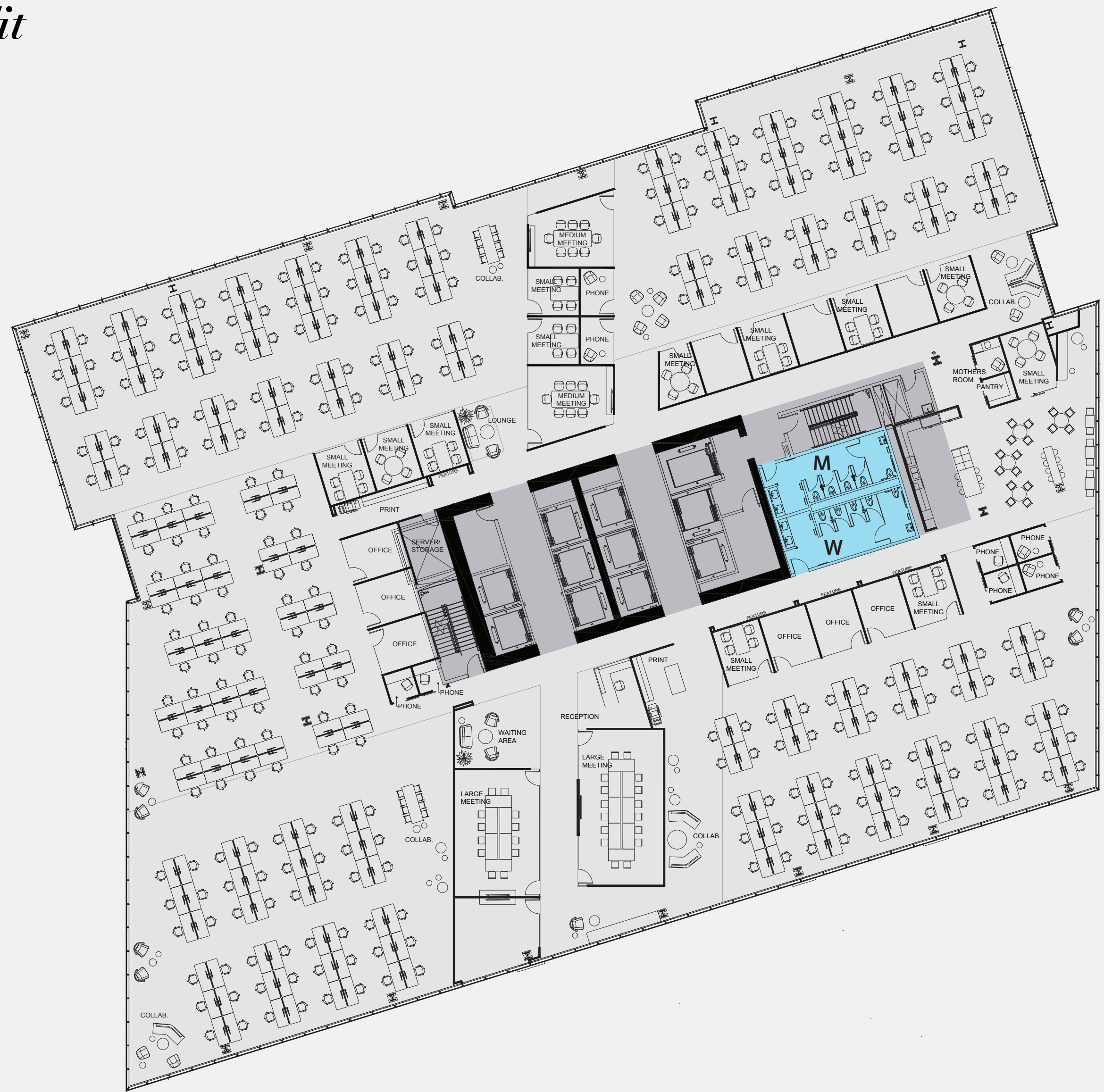




*Floorplan Roof Level*



Creative Test Fit



PROGRAM:

OPEN OFFICE SPACES	292
PRIVATE OFFICES	9
CONFERENCE ROOMS	5
FOCUS ROOMS	12
PHONE ROOMS	8
COLLABORATION AREAS	6
COFFEE AREAS	1
TOTAL HEADCOUNT	302



# Activity Based Test Fit



## PROGRAM:

OPEN OFFICE SPACES	110
PRIVATE OFFICES	16
CONFERENCE ROOMS	5
FOCUS ROOMS	11
PHONE ROOMS	12
COLLABORATION AREAS	9
COFFEE AREAS	2
TOTAL HEADCOUNT	127



# Professional Test Fit



## PROGRAM:

OPEN OFFICE SPACES	80
PRIVATE OFFICES	45
CONFERENCE ROOMS	5
FOCUS ROOMS	8
PHONE ROOMS	5
COLLABORATION AREAS	4
COFFEE AREAS	1
TOTAL HEADCOUNT	126

# Traditional Test Fit

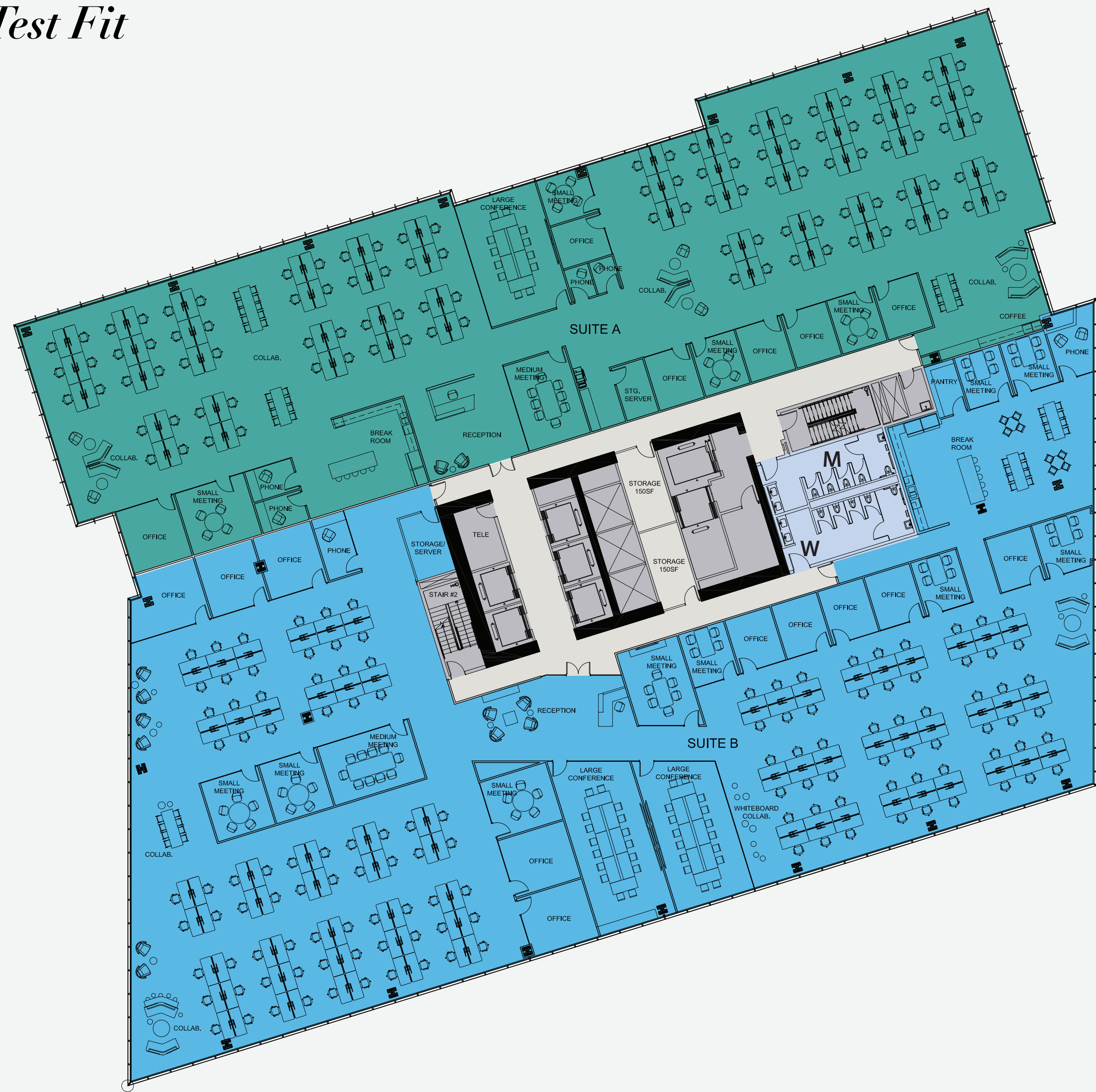


## PROGRAM:

OPEN OFFICE SPACES	148
PRIVATE OFFICES	51
CONFERENCE ROOMS	5
FOCUS ROOMS	5
PHONE ROOMS	9
COLLABORATION AREAS	7
COFFEE AREAS	1
TOTAL HEADCOUNT	200



# Multi-Tenant Test Fit



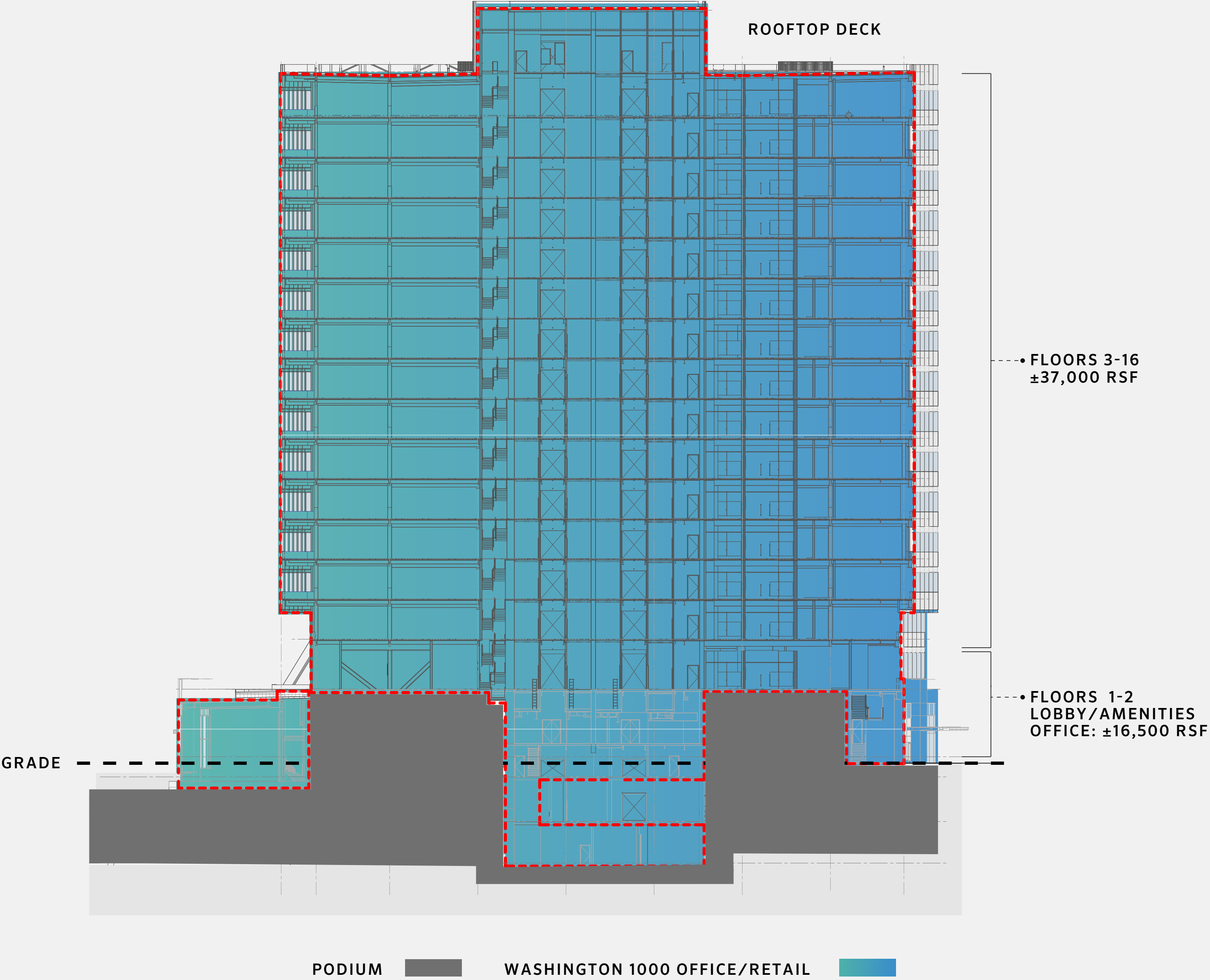
## PROGRAM (SUITE A):

OPEN OFFICE SPACES	110
PRIVATE OFFICES	6
CONFERENCE ROOMS	2
FOCUS ROOMS	4
PHONE ROOMS	4
COLLABORATION AREAS	5
COFFEE AREAS	1
TOTAL HEADCOUNT	117

## PROGRAM (SUITE B):

OPEN OFFICE SPACES	128
PRIVATE OFFICES	9
CONFERENCE ROOMS	3
FOCUS ROOMS	6
PHONE ROOMS	4
COLLABORATION AREAS	3
COFFEE AREAS	0
TOTAL HEADCOUNT	138

Stacking Plan







*Washington1000HPP.com*

**CBRE**

*Greg Inglin*

206 251 7521  
greg.inglin@cbre.com

*Laura Ford*

206 280 4688  
laura.ford@cbre.com

*David Abbott*

206 719 1747  
david.abbott@cbre.com

*Tim Owens*

425 829 6913  
tim.owens@cbre.com

*Katie Nagle*

925 876 2111  
katie.nagle@cbre.com

\*ALL RENDERINGS AND FLOORPLANS SUBJECT TO CHANGE